



Brammah House

London, SW1W • Guide Price £1,350,000 • Leasehold

A modern 2 bedroom apartment in Grosvenor Waterside.

The apartment comprises 2 bedrooms, 2 bathrooms (1 en-suite), open plan reception and kitchen. Two private balconies overlooking the development with North westerly views. Additional benefits are 24 hour concierge, residents spa and gym facilities and onsite shops and cafes.



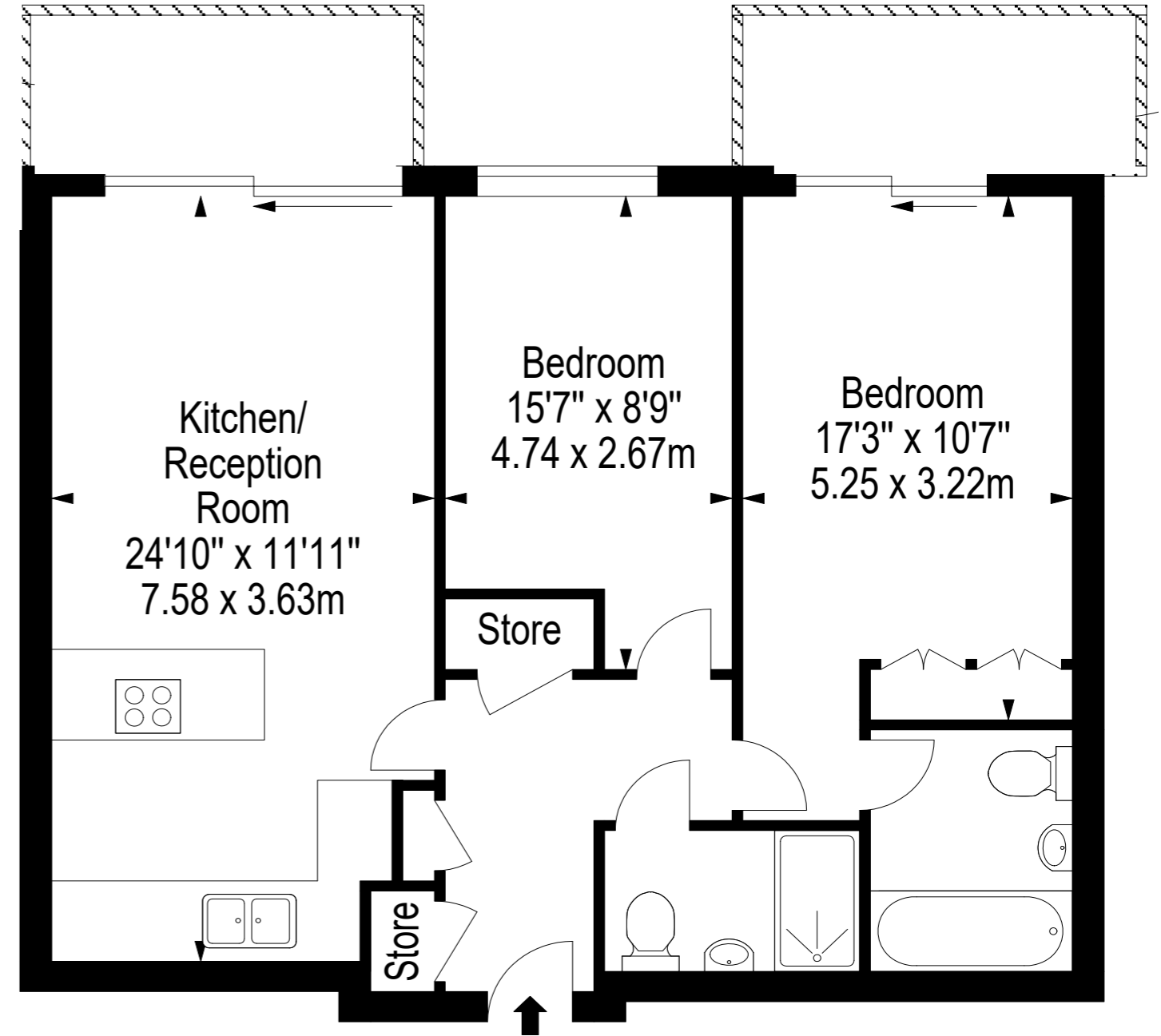


Bramah House London, SW1W • Guide Price £1,350,000 • Leasehold

Eighth Floor

Gross Internal Area (approx): 74.04 sq.m / 797 sq.ft
For identification only. Not to scale.

©Floorplanz Ltd



For more information, contact:

Kris Ericsson

T + 44 (0) 7595 757 516

E kris@smithericsson.com

W smithericsson.com

Matthew Smith

T +44 (0) 7540 848 917

E matt@smithericsson.com

   @smithericsson

Disclaimer

Every attempt has been made to ensure accuracy, however these property particulars are approximate and for illustrative purposes only. They have been prepared in good faith and they are not intended to constitute part of an offer of contract. We have not carried out a structural survey and the services, appliances and specific fittings have not been tested. All photographs, measurements, floor plans and distances referred to are given as a guide only and should not be relied upon for the purchase of any fixture or fittings. Lease details, service charges and ground rent (where applicable) are given as a guide only and should be checked prior to agreeing a sale.

**Smith &
Ericsson**